

 **KREIDLER**<sup>®</sup>  
fast forward

# CATALOGUE

## BIKES & E-BIKES 2015







Our philosophy can be explained with a single word:

**PASSION.**

This passion is the endeavour to develop the perfect bike for the required use. This is why we rely on a team that has the same thing in common: an enthusiasm for bikes that goes much further than the technology. As far as we are concerned, bikes have always been inseparable with a positive lifestyle that is characterized by vitality and a joy of life and that is why we always link handcraft precision in relation to the design, production and assembly, with our passion and enthusiasm.

These emotions stimulate us from anew every day - from the planning to the product development and the design and assembly. The team has succeeded in breathing new life into an almost forgotten brand. Kreidler bikes convince with their innovative design and ultra-modern functionality. They hereby frequently score with independent tests or in hard races.

We are heading in the right direction - for us and our customers.

**Kreidler - fast forward!**

MOUNTAIN // 04

CROSS // 20

E-BIKES // 24

TREKKING // 44

CITY // 54

MOOI FIETSEN // 58

You will find more about Kreidler and the latest news and products here: [www.kreidler.com](http://www.kreidler.com)







# FULLY

Our two 650B full carbon-fullies are sporting bikes for ambitious single trail surfer. The Magura fork TS8 R with the efficient 140mm spring range and the Magura TX RC spring element virtually stipulate a demanding terrain as the place of use. Both of the bikes excel with an optimal combination of a high degree of shock absorption behaviour and a playfully agile manoeuvrability. The bikes from the Straight Carbon series even make a good figure when ascending slopes with their little more than 11kg weight and the other equipment also leaves nothing to be desired: with an SRAM XO gear shifter, Schwalbe Racing Ralph tyres and slide-in shafts on both the front and back wheel, we especially position our straight carbons as all-mountain-bikes between the expensive high-end fullies - and that with a perfect price-performance ratio.

## STRAIGHT CARBON 2.0

**FRAME** MTB Full Suspension carbon, 2 pcs. Monocoque form

**SIZE** Gents 650B: 43, 48, 53 cm

**FORK** Magura TS8 R 140 mm

**DAMPER** Magura TS RC

**SHIFTING** SRAM XO 3x10

**BRAKES** Magura MT6 hydraulically disc brake

**TIRES** Schwalbe Racing Ralph, 57-584

**WEIGHT** 11,6 kg

**COLOUR** pearl red / pearl white



# STRAIGHT



**160**  
**CARBON 2.0**





### STRAIGHT CARBON 1.0

**FRAME** MTB Full Suspension carbon, 1 pcs. Monocoque form

**SIZE** Gents 650B: 43, 48, 53 cm

**FORK** Magura TS8 R 140 mm

**DAMPER** Magura TS RC

**SHIFTING** Shimano Deore XT 3x10

**BRAKES** disc brake Shimano XT BR-M785, hydraulically

**TIRES** Schwalbe Racing Ralph, 57-584

**WEIGHT** 11,9 kg

**COLOUR** reflex green / pearl white





ARBOON 1.0







MORE ABOUT OUR KREIDLER-RACING TEAM: [WWW.KREIDLER.COM/WERKSTEAM](http://WWW.KREIDLER.COM/WERKSTEAM)





A starting signal rips through the air and the race begins. All eyes focus on this moment. Any inattentiveness can make a difference between winning and losing. Absolute high performance is expected of the body, spirit and material on the spot. We are prepared - with passion and enthusiasm!

## KREIDLER RACING TEAM – TO THE TOP WITH A PASSION

Our passion is called »bike« and we are often asked where our enthusiasm comes from. Is it the first sensation of limitless freedom in childhood? Or the first independence? Or is the fascination of speed and adventure enchanting us? Each us has our own answer and history, but one thing is clear: we all have the love of biking in use and it will never let us go. It is the core of our daily work, our motivation and inspires us repeatedly to high performances - in training, during the bike development and during races, and the performance of our pro-team is on the right road, both with regard to the bike and the cyclist. Both of the cyclists were able to prove what they and their new team bikes have in them even in the first year. Matthias Leisling achieved a sensational leap to the top of the UCI MTB Marathon Series 2014/2015 (1st place/as of 2<sup>nd</sup> September 2014).

### MATTHIAS LEISLING

World ranking: 1st.  
(As of 2<sup>nd</sup> September 2014 |  
UCI World Marathon Series)



**TORSTEN MARX**  
World ranking: 9.  
(As of 5<sup>th</sup> August 2014 |  
UCI World Marathon Series)

**LEVERVE®**  
Handmade in Germany

**Syntaxe**  
Strong. Light. Smart.



**MAGURA**

**KED**  
GERMANY

**artistic**  
werbewelten

**tune**

**SCHWALBE**

**NW**  
NORTHWAVE

**SHIMANO®**

**o\_synce®**  
be in motion

**TOYOTA SAATCHI**





TEAMBIKE  
PROTOTYPE

We obviously do not want to deprive the further development of our super-light team weapon. With its weight of 10.9 kg, the Stud size 29 Carbon Team Replica comes close to the racing team bike, the sovereign Shimano XT 2 x 10 and a top complete supply of equipment that makes it ready for absolute top performances. The fact that the refined basic construction on the basis of the Team-Monocoque frame is proven by the top placements of our racing team cyclist. An optimally noticeable bike with an excellent performance - even when put to ambitious racing use.





# BK REPLICA



## STUD 29ER CARBON TEAM REPLICA

**FRAME** Carbon 12k, 1 pcs. Monocoque compact BGrade

**SIZE** Gents 29": 43, 48, 53 cm

**FORK** Magura TS6 100 mm, tapered, 15 mm thru axle

**SHIFTING** Shimano XT 2x10

**BRAKES** Magura MT6 hydraulically disc brake

**TIRES** Schwalbe Racing Ralph 29er, 57-622

**WEIGHT** 10,9 kg

**COLOUR** black-red matte



# DICE



## DICE SL 29ER 2.0

**FRAME** aluminium 6061  
**SIZE** Gents 29": 42, 47, 51 cm  
**FORK** Rock Shox Recon Gold, 100 mm, tapered  
**SHIFTING** Shimano XT 3x10  
**BRAKES** disc brake Shimano SLX, hydraulically  
**TIRES** Schwalbe Racing Ralph 29er, 57-622  
**WEIGHT** 12,9 kg  
**COLOUR** black-orange matte

## DICE 29ER 2.0

**FRAME** aluminium 6061  
**SIZE** Gents 29": 43, 47, 52 cm  
**FORK** Rock Shox XC32, 100 mm  
**SHIFTING** Shimano XT 3x10  
**BRAKES** disc brake Shimano BR-M395, hydraulically  
**TIRES** Schwalbe Smart Sam 29er, 57-622  
**WEIGHT** 13,6 kg  
**COLOUR** black matte

## DICE SL 29ER 1.0

**FRAME** aluminium 6061  
**SIZE** Gents 29": 42, 47, 51 cm  
**FORK** Rock Shox 30 Gold, 100 mm, tapered  
**SHIFTING** Shimano Deore SLX 3x10  
**BRAKES** disc brake Shimano BR-M395, hydraulically  
**TIRES** Schwalbe Racing Ralph 29er, 57-622  
**WEIGHT** 13,2 kg  
**COLOUR** green-blue matte







### DICE 29ER

**FRAME** aluminium 6061  
**SIZE** Gents 29": 42, 47, 51 cm  
**FORK** Suntour SF14-XCM-HLO-DS-29  
**SHIFTING** Shimano Acera 24-speed  
**BRAKES** disc brake Shimano BR-11 355, hydraulically  
**TIRES** Schwalbe Smart Sam 29er, 57-622  
**WEIGHT** 13,8 kg  
**COLOUR** black matte



### DICE 29ER 1.0

**FRAME** aluminium 6061  
**SIZE** Gents 29": 43, 47, 52 cm  
**FORK** Rock Shox XC30, 100 mm  
**SHIFTING** Shimano Deore 3x10  
**BRAKES** disc brake Shimano BR-11 355, hydraulically  
**TIRES** Schwalbe Smart Sam 29er, 57-622  
**WEIGHT** 13,8 kg  
**COLOUR** shiny white

### MUSTANG 29ER 1.0 LIMITED

**FRAME** aluminium 6061  
**SIZE** Gents 29": 50, 55, 60 cm  
**FORK** Suntour SF14-M3010  
**SHIFTING** Shimano Acera 24-speed  
**BRAKES** aluminium V-Brake  
**TIRES** MTB 29er 54-622  
**WEIGHT** 13,8 kg  
**COLOUR** shiny black / pearl white





### STUD CARBON 2.0

**FRAME** Carbon 12k, 1 pcs. Monocoque form

**SIZE** Gents 650B: 43, 48, 53 cm

**FORK** Magura TS 8 R 100 mm, tapered, 15 mm thru axle

**SHIFTING** Sram X01 1x11

**BRAKES** Magura MT6 hydraulically disc brake

**TIRES** Schwalbe Thunder Burt, 54-584

**WEIGHT** 9,8 kg

**COLOUR** pearl red / pearl white



### STUD CARBON 1.0

**FRAME** Carbon 12k, 1 pcs. Monocoque form

**SIZE** Gents 650B: 43, 48, 53 cm

**FORK** Magura TS 6, tapered

**SHIFTING** Shimano XT 2x10

**BRAKES** disc brake Shimano XT BR-M785, hydraulically

**TIRES** Schwalbe Thunder Burt, 54-584

**WEIGHT** 10,2 kg

**COLOUR** pearl red / shiny black

STUD CARBON 2.0





650B

MRBOM

Weighing in at just 10 kg, our top up-to-date Stud Carbon Hardtails are extremely light pieces of sport equipment, despite them being soundly equipped with Shimano XT or SRAM gear shifter and they attract even the most ambitious bikers with their perfect performance. The fact that we especially only use top components in all of our lightweight construction bikes reflects the demands we place in the quality and a top functionality. Syntace handlebar and front end, Magura suspension fork and brakes and the Thunder Bird tyres from Schwalbe are proof of the fine components selection. The Stud is available both with 1x11 SRAM- or 2x10-gear XTbikes as a perfectly packaged solution.



650B



## TOP CLASS BIKES FOR A FIRST CLASS TEAM.

Kreidler is the official bike partner for the SC Paderborn 07 (1<sup>st</sup> Bundesliga)

The SC Paderborn 07 has started the new season 2014/2015 of Germany's top football league with a training session on 35 mountain bikes from Kreidler. Most of the German football clubs are using mountain bikes as part of the fitness training and even the German national football team used mountain bikes to prepare for the World Championship.

### DICE SL 2.0

- FRAME** aluminium 6061
- SIZE** Gents 650B: 42, 47, 51 cm
- FORK** Rock Shox Recon Gold, 100 mm, tapered
- SHIFTING** Shimano XT 3x10
- BRAKES** disc brake Shimano SLX, hydraulically
- TIRES** Schwalbe Racing Ralph, 57-584
- WEIGHT** 12,0 kg
- COLOUR** red-black matte



### DICE SL 1.0

- FRAME** aluminium 6061
- SIZE** Gents 650B: 42, 47, 51 cm
- FORK** Rock Shox 30 Gold, 100 mm, tapered
- SHIFTING** Shimano SLX 3x10
- BRAKES** disc brake Shimano Acera BR-M395, hydraulically
- TIRES** Schwalbe Racing Ralph, 57-584
- WEIGHT** 12,6 kg
- COLOUR** cyan-white matte





**DICE BIG 7.0**

**FRAME** aluminium 6061  
**SIZE** Gents 650B: 45, 49, 54 cm  
**FORK** Rock Shox XC32, 100 mm  
**SHIFTING** Shimano XT 3x10  
**BRAKES** disc brake Shimano BR-M596, hydraulically  
**TIRES** Schwalbe Rapid Rob, 57-584  
**WEIGHT** 12,9 kg  
**COLOUR** black matte

**DICE BIG 5.0**

**FRAME** aluminium 6061  
**SIZE** Gents 650B: 45, 49, 54 cm  
**FORK** Rock Shox XC30, 100 mm  
**SHIFTING** Shimano Deore 3x10  
**BRAKES** disc brake Shimano BR-11-355, hydraulically  
**TIRES** Schwalbe Rapid Rob, 57-584  
**WEIGHT** 13,6 kg  
**COLOUR** black matte

**DICE BIG 4.0**

**FRAME** aluminium 6061  
**SIZE** Gents 650B: 40, 45, 49, 54 cm  
**FORK** Suntour SF14-XCM-HLO-DS-27.5  
**SHIFTING** Shimano Deore 27-speed  
**BRAKES** disc brake Shimano BR-11 355, hydraulically  
**TIRES** Schwalbe Rapid Rob, 57-584  
**WEIGHT** 13,6 kg  
**COLOUR** white matte

**DICE BIG 3.0**

**FRAME** aluminium 6061  
**SIZE** Gents 650B: 40, 45, 49, 54 cm  
**FORK** Suntour SF14-XCT-MLO-DS-27.5, 100 mm  
**SHIFTING** Shimano Acera 24-speed  
**BRAKES** disc brake Shimano BR-11 355, hydraulically  
**TIRES** Schwalbe Rapid Rob, 57-584  
**WEIGHT** 13,9 kg  
**COLOUR** orange matte or black matte



also available in orange matte



MUSTANG

2.0





**MUSTANG MTB 2.0**

**FRAME** aluminium 6061  
**SIZE** Gents 26": 42, 47, 51, 56 cm  
**FORK** Suntour SF13-XCT  
**SHIFTING** Shimano Acera 24-speed  
**BRAKES** aluminium V-Brake  
**TIRES** Schwalbe Rapid Rob, 57-559  
**WEIGHT** 12,8 kg  
**COLOUR** anthracite matte

**MUSTANG MTB 1.0 EQ**

**FRAME** aluminium 6061  
**SIZE** Gents 26": 38, 42, 47, 51, 56 cm  
**FORK** Suntour SF14-M3030  
**SHIFTING** Shimano 21-speed  
**BRAKES** aluminium V-Brake  
**TIRES** Kenda MTB Tires 54-559  
**WEIGHT** 13,8 kg  
**COLOUR** pearl red / shiny black

**MUSTANG MTB 1.0 EQ**

**FRAME** aluminium 6061  
**SIZE** Gents 26": 38, 42, 47, 51, 56 cm  
**FORK** Suntour SF14-M3030  
**SHIFTING** Shimano Nexus 7-speed  
**BRAKES** aluminium V-Brake  
**TIRES** Kenda MTB Tires 54-559  
**WEIGHT** 13,8 kg  
**COLOUR** pearl red / shiny black





CROSS



MS



We present the new Small Blind from our Cross Series: a fast bike that is suitable for both touring and everyday use. With its puristic design, dispensing with superfluous items and fundamentally equipped with solid components, the Small Blind is suitable for a sporting everyday use in the urban jungle and on light terrain. The especially torsion-resistant aluminium frame with the rigid frame and the reliable Shimano 27-gear transmission and the Schwalbe Kojak tyres, provide ideal requirements for a navigation that is as quick as a shot and meets sporting demands. When doing so, the Shimano hydraulic brakes with the clever one-way ventilation that are suitable for all weathers provides the best control in all climates.

### SMALL BLIND

---

**FRAME** aluminium 6061

**SIZE** Gents 28": 42, 47, 51 cm

**FORK** Trekking aluminium fork

**SHIFTING** Shimano Alivio 27-speed

**BRAKES** Shimano Alivio Disc

**TIRES** Schwalbe Kojak 35-622

**WEIGHT** 11,6 kg

**COLOUR** black matte





CROSS



### STACK 3.0

**FRAME** aluminium 6061  
**SIZE** Gents 28": 50, 55, 60 cm  
**FORK** Suntour NEX4610 with Lock-Out  
**SHIFTING** Shimano XT 27-speed  
**BRAKES** disc brake Shimano BR-M395, hydraulically  
**TIRES** Schwalbe CX Comp 35-622  
**WEIGHT** 13,2 kg  
**COLOUR** shiny anthracite

### STACK 2.0 EQ

**FRAME** aluminium 6061  
**SIZE** Gents 28": 50, 55, 60 cm | Ladies 28": 45, 50 cm  
**FORK** Suntour NEX-HLO-P-700  
**SHIFTING** Shimano XT 27-speed  
**BRAKES** V-Brake aluminium, black matte  
**TIRES** Schwalbe CX Comp 35-622  
**WEIGHT** 14,4 kg  
**COLOUR** pearl white







### MUSTANG CROSS 1.0 EQ

**FRAME** aluminium 6061  
**SIZE** Gents 28": 50, 55, 60 cm | Ladies 28": 45, 50, 55 cm  
**FORK** Suntour CR-8V  
**SHIFTING** Shimano Nexus 7-speed coasterbrake  
**BRAKES** aluminium V-Brake  
**TIRES** Kenda Trekking Tires 37-622  
**WEIGHT** 14,6 kg  
**COLOUR** shiny black / pearl white

### MUSTANG CROSS 1.0 EQ

**FRAME** aluminium 6061  
**SIZE** Gents 28": 50, 55, 60 cm | Ladies 28": 45, 50 cm  
**FORK** Suntour CR-8V  
**SHIFTING** Shimano Acera 24-speed  
**BRAKES** aluminium V-Brake  
**TIRES** Kenda Trekking Tires 37-622  
**WEIGHT** 14,6 kg  
**COLOUR** shiny black / pearl white



MUSTANG  
CROSS





# RE.VOLT!

DISCOVER THE KREIDLER E-BIKES.

LET YOURSELF BE MOVED - WITH KREIDLER E-BIKES.

Do you remember the moment when you learned to cycle and your parents gave you a small push to start you off? The first time on a Kreidler E-Bike is a similar experience, only that you do not need a push.

Our society is facing great changes in urban spaces. Megacities that join together, a permanent burden caused by road traffic, high energy prices and last but not least, an expanding environment and health-consciousness make new traffic

concepts necessary. The latest key technology for a sustainable mobility and traffic system are based on high performance electric drives. Ascents? Easy to overcome.

Long stretches? Easy to cope with. Traffic congestion? Go around them without any stress. The bike is the motor behind "New Mobility": biking fun cannot be faster, more flexible, more sustainable and more customized.

More information on Kreidler eBikes is available here: [www.kreidler.com/ebikes](http://www.kreidler.com/ebikes)

## SPORT

With e-power over hill and dale.  
Sporting e-mountain bikes for a relaxing up and down.

## ACTIVE

The clever alternative to the car.  
Fast & powerful - our e-bikes for active bikers.

## COMFORT

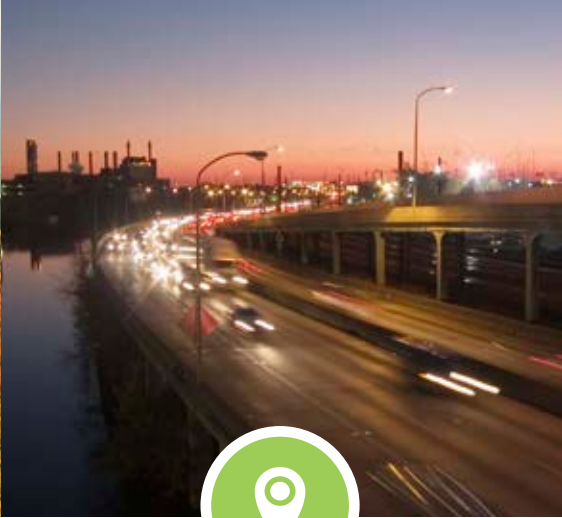
Comfortable progress in the city.  
For bikers with a special demand for comfort.





## MOBILITY

30 minutes of biking per day keep you fit and healthy. And that without perspiration thanks to an eBike.  
Couch potatoes on tour.



## IMPROVED MOBILITY

Rush hour? No problem. With the e-bike, you simply ride through traffic congestion, alongside it or next to it on the cycle path.



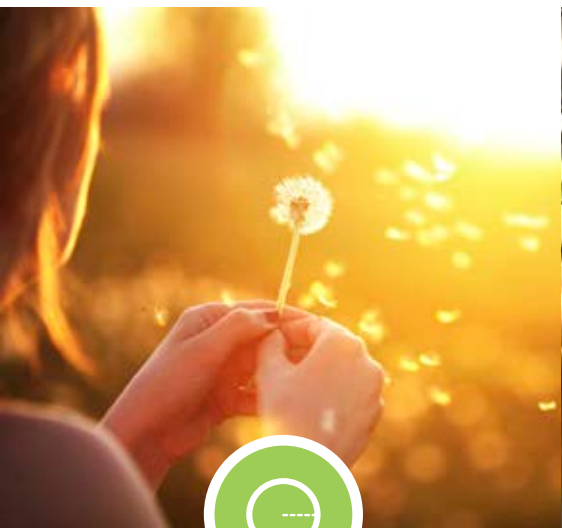
## FRESH AIR

Exhaust fumes, particulate matter, smog. EBikes do not emit any emissions and thereby make an important contribution to better air in our metropolises.



## SAVE CASH

Not only the purchase of an e-bike is much less expensive than that of a car, its upkeep is too.



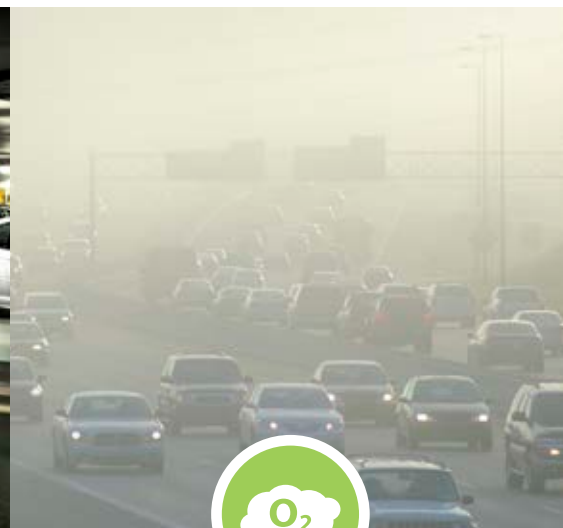
## BE INDEPENDENT

The e-bike is individual mobility: simply charge and cycle off. You decide when and where to, without waiting for delayed trams and busses, for example.



## NO SEARCH FOR PARKING SPACES

It is getting tight in metropolises and parking spaces are becoming increasingly coveted. The annoying search for parking spaces is a thing of the past with the eBike.



## CO<sub>2</sub>-BALANCE

More eBikes mean fewer cars and a lower environmental burden. Did you know? No other vehicle is as energy-efficient as an eBike.



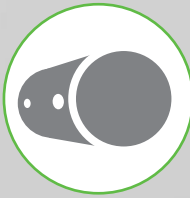
## BE SMART

Electromobility is the new mobility for clever people. The benefits are obvious. When are you going to switch?

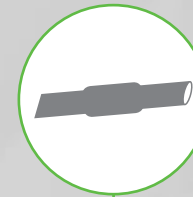


# E-BIKES

**Internal Cable**  
Protection against soiling and external damage. Clean looks.



**Oversized Components**  
Large diameter clamping area: more safety on account of higher stiffness.



**Hydro Formed Tube**  
Tube geometry formed with hydraulic pressure: frame with high tensile strength and hardness with optimal exactness of dimensions and shape.



**Tapered Headtube**  
Conical headtube: increase stability and stiffness for high strength and precise steering.



**3D Dropout**  
Extreme lightness, integrated stand mount, interchangeable derailleur hanger.



## THE SECCON SAFETY CONCEPT

In addition to attractive design and a broad model range, Kreidler bicycles stand for comprehensive safety equipment. There's a good reason why all Kreidler e-bikes bear the SECCON Security Concept seal of quality. Safety in all situations is the premise of the bikes' engineering.



By the way: you can find  
Kreidler's electric scooters at [www.kreidler.com](http://www.kreidler.com)

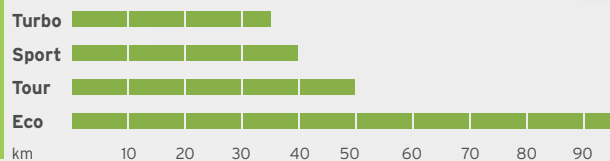


## BOSCH DRIVE UNITS - THREE LINES FOR RIDING FUN.

Bosch sets E-Bike and pedelec standards with its Performance and Active-Cruise product lines. Both of these lines have support profiles that deviate from each other, depending on the biker's demands and requirements. Performance Cruise drives provide sporty E-Bikers with a sufficient amount of power on all terrains and in all biking styles - from tarmac roads to single trail and from flat country up into the mountains. The Active Cruise line is entirely different: harmoniously reliable drives for all biking situations with the focus being on efficiency and ergonomics.

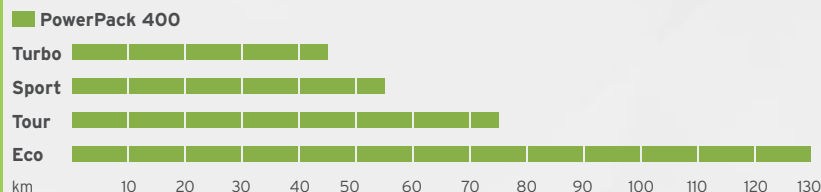
### Range: PERFORMANCE SPEED (45 km/h) with PowerPack 400 Wh\*

SPORTY



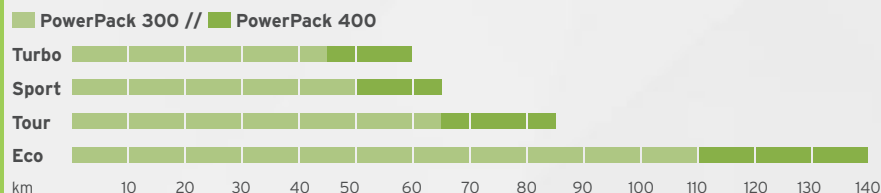
### Range: PERFORMANCE CRUISE (25 km/h) with PowerPack 400 Wh\*

DYNAMIC



### Range: ACTIVE CRUISE (25 km/h) with PowerPack 300 Wh or 400 Wh\*

SMOOTH



\* This information refers to favourable conditions: Slightly hilly terrain with an average speed of 25 km/h, light headwind, 10 to 20° C ambient temperature, average quality bicycle components, tyre profile and pressure with average rolling resistance, favourable pedalling frequency, e-bike rider mostly shifting correctly, additional weight (excluding the bicycle) 70 kg to 80 kg. The ranges calculated are typical values that can be reduced as soon as one of the conditions named above is less favourable.

e-powered by



#### INTUVIA BOARDCOMPUTER

Simple operation | USB port for charging (e.g. MP 3 player or smartphone) | start assist up to 6 km/h | 5 different modes: eco, tour, sport, turbo, off | information on range, day trip, travel time and average speed | display for current motor output, clock, maximum speed and total mileage | total operation time and configuration menu can be called up

#### ALL-IN-ONE BOARDCOMPUTER NYON

Navigation, fitness and Internet features | Bicycle-optimised navigation system with moving map | Bluetooth-Connection | Heart rate chest strap connection enables many additional training- function | Through Smartphone connection, SMS messages and calls are displayed | Large 4.3-inch colour display | Micro-USB interface | Motor support for 5 riding modes can be set individually | Waterproof with closed USB cap

#### DRIVE UNIT

##### Performance Speed Drive Unit

pedal assistance up to 45 km/h | weight: 3.5 kg | rated output: 350 watt | torque: 40 - 60 Nm | mid-motor (low centre of gravity) | electronically controlled by 3 sensors for speed, torque, and pedal frequency | road spray and chip protection | maintenance free | start up response: sporty

##### Performance Cruise Drive Unit

pedal assistance up to 25 km/h | weight: 3.5 kg | rated output: 250 watt | torque: 40 - 60 Nm | mid-motor (low centre of gravity) | electronically controlled by 3 sensors for speed, torque, and pedal frequency | maintenance free | road spray and chip protection | start up response: dynamic

##### Active Cruise Drive Unit

pedal assistance up to 25 km/h | weight: 3.5 kg | rated output: 250 watt | torque: 35 - 48 Nm | mid-motor (low centre of gravity) | electronically controlled by 3 sensors for speed, torque, and pedal frequency | road spray and chip protection | maintenance free | start up response: smooth

#### BATTERY (power pack)

Light battery - best in class | simple handling | long lifecycle and high mileage | easy to store and charge - any time and any place | possible to charge without removing PowerPack | 2 year warranty

**PowerPack 300** | voltage: 36 V | capacity: 8.4 Ah | energy content: 300 Wh | weight: 2.2 kg | anti-theft system | can be charged at 230 volt outlet (100 % in 2.5 hours)

**PowerPack 400** | voltage: 36 V | capacity: 11.6 Ah | energy content: 400 Wh | weight: 2.5 kg | anti-theft system | can be charged at 230 volt outlet (100% in 3.5 hours)



**E-BIKES  
SPORT**

**// Strong performance,  
brilliant handling!**

*Absolutely certain – racing downhill is always more fun than pedalling uphill. With my Kreidler eBike, I have my own lift with me so to speak, enabling me to fully concentrate on the perfect flow.*

**//**





## LAS VEGAS 2.0

**SYSTEM** Bosch Performance Cruise / Battery 400 Wh

**FRAME** aluminium 6061

**SIZE** Gents 650B: 48, 53 cm

**FORK** Magura TS8, tapered, 140 mm

**DAMPER** Magura TS RC 200x51

**SHIFTING** Shimano XT 10-speed

**BRAKES** disc brake Shimano XT BR-M785, hydraulically

**TIRES** Schwalbe Racing Ralph, 57-584

**WEIGHT** 21,9 kg (with battery)

**COLOUR** pearl red / pearl white





# SP EBIKES



## LAS VEGAS 1.0

**SYSTEM** Bosch Performance Cruise / Battery 400 Wh

**FRAME** aluminium 6061

**SIZE** Gents 650B: 48, 53 cm

**FORK** Magura TS8, tapered, 140 mm

**DAMPER** Magura TS RC 200X51

**SHIFTING** Shimano XT 10-speed

**BRAKES** disc brake Shimano BR-M615, hydraulically

**TIRES** Schwalbe Racing Ralph, 57-584

**WEIGHT** 22,2 kg (with battery)

**COLOUR** white / shiny black

## LAS VEGAS

**SYSTEM** Bosch Performance Cruise / Battery 400 Wh

**FRAME** aluminium 6061

**SIZE** Gents 650B: 48, 53 cm

**FORK** Suntour SF15-EPIXON, tapered, 140 mm

**DAMPER** Magura TS RC 200X51

**SHIFTING** Shimano Alivio 9-speed

**BRAKES** disc brake Shimano BR 11-335, hydraulically

**TIRES** Schwalbe Rapid Rob, 57-584

**WEIGHT** 22,6 kg (with battery)

**COLOUR** white matte









E-BIKES



### VITALITY DICE 29ER 1.0

**SYSTEM** Bosch Performance Cruise / Battery 400 Wh  
**FRAME** aluminium 6061  
**SIZE** Gents 29": 47, 52 cm  
**FORK** Magura TS6, tapered, 100 mm  
**SHIFTING** Shimano XT 10-speed  
**BRAKES** disc brake Shimano BR-M615, hydraulically  
**TIRES** Schwalbe Racing Ralph 29er, 57-622  
**WEIGHT** 21,8 kg (with battery)  
**COLOUR** white / shiny black

### VITALITY DICE 29ER 2.0

**SYSTEM** Bosch Performance Cruise / Battery 400 Wh  
**FRAME** aluminium 6061  
**SIZE** Gents 29": 47, 52 cm  
**FORK** Magura TS6, tapered, 100 mm  
**SHIFTING** Shimano XT 10-speed  
**BRAKES** Magura MT4 hydraulically disc brake  
**TIRES** Schwalbe Racing Ralph 29er, 57-622  
**WEIGHT** 19,8 kg (with battery)  
**COLOUR** pearl red / pearl white

### VITALITY DICE 29ER

**SYSTEM** Bosch Performance Cruise / Battery 400 Wh  
**FRAME** aluminium 6061  
**SIZE** Gents 29": 47, 52 cm  
**FORK** Suntour SF15-EPIXON, tapered, 100 mm  
**SHIFTING** Shimano Alivio 9-speed  
**BRAKES** Shimano Alivio BR-M405, hydraulically  
**TIRES** Schwalbe Smart Sam 29er, 57-622  
**WEIGHT** 22,9 kg (with battery)  
**COLOUR** white matte







VITALITY DICE 29ER 2.0

MAGURA

KREIDLER

VITALITY DICE 29ER

BOSCH

29ER

PIST

SCHWALBE

SCHWALBE

SCHWALBE

SCHWALBE



E-BIKES ACTIVE

45 km/h

The Vitality Select Performance Speed accelerates powerfully and harmoniously up to a max. speed of 45 km/h and thereby closes the gap between 25 km/h eBikes and larger motorized bikes. With regard to safety and comfort, the swift Vitality Select is obviously designed for higher speeds.

THE OPERATING LICENSE FOR THIS VEHICLE IS VALID ONLY IN GERMANY. FOR APPROVAL INFORMATION IN YOUR COUNTRY PLEASE CONTACT YOUR DEALER.

### VITALITY SELECT

**SYSTEM** Bosch Performance Speed / Battery 400 Wh

**FRAME** aluminium 6061

**SIZE** Gents 28": 50, 55, 60 cm

**FORK** Suntour SF13-MT-E45-HL0, tapered

**SHIFTING** Shimano XT 10-speed

**BRAKES** Magura MT4 hydraulically disc brake

**TIRES** Schwalbe Energizer, 40-622, reflex

**WEIGHT** 24,4 kg (with battery)

**COLOUR** black matte

### VITALITY ECO 8

**SYSTEM** Bosch Performance Cruise / Battery 400 Wh

**FRAME** aluminium 6061

**SIZE** Gents 28": 50, 55, 60 cm | Ladies 28": 45, 50, 55 cm

**FORK** Suntour NEX4610 with Lock-Out

**SHIFTING** Shimano XT 10-speed

**BRAKES** Magura MT4 hydraulically disc brake

**TIRES** Schwalbe Energizer, 40-622, reflex

**WEIGHT** 23,2 kg (with battery)

**COLOUR** black matte



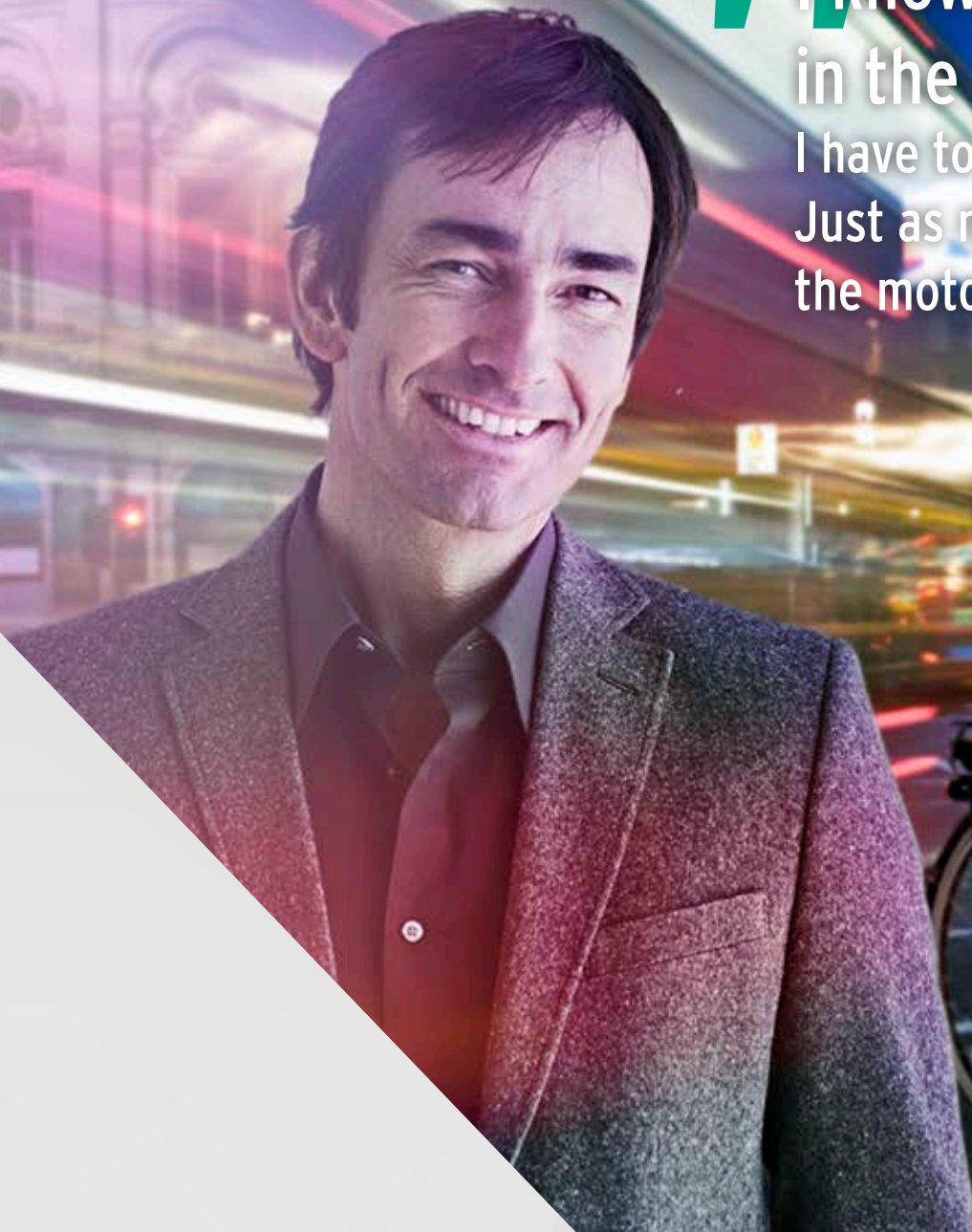
Gents-Bike: available with upcharge as special edition with a Bosch Nyon on-board computer. Ask your Dealer.





I know best about dynamic  
in the New Economy.

I have to act flexibly and fast here.  
Just as my Kreidler eBike does:  
the motor for my New Mobility.





COMFORT FOR  
E-BIKES

**Fast, stylish  
and flexible ...**

... and also do more for my health and the environment.  
I can get through the urban jungle relaxed with my  
Kreidler eBike. Who needs a car?





## THE VITALITY ECO 6

- + reinforced quality handlebars & a stem from HUMPERT with an angle adjustment
- + high level of biking comfort due to the SUNTOUR suspension fork & suspension seat post
- + ergonomic handles and gel saddle from VELO
- + excellent visibility at night thanks to the TRELOCK LED lamps
- + a bicycle rack with battery holder from RACKTIME that is suitable for touring

### VITALITY ECO 6

**SYSTEM** Bosch Active Cruise / Battery 400 Wh

**FRAME** aluminium 6061

**SIZE** coasterbrake = Gents 28": 50, 55, 60 cm | Wave 28": 45, 50, 55 cm

freehub = Gents 28": 50, 55, 60 cm | Ladies 28": 45, 50, 55 cm | Wave 28": 45, 50, 55 cm

**FORK** Suntour SF14-CR85-E25

**SHIFTING** Shimano Nexus 8-speed coasterbrake or freehub

**BRAKES** Magura HS11, hydraulically rim brake

**TIRES** Schwalbe Energizer, 40-622, reflex

**WEIGHT** 26,0 kg (with battery)

**COLOUR** black matte



**140 kg**  
**MAX. WEIGHT**



COMBIKES FOR



### VITALITY ECO 5 NL

- SYSTEM** Bosch Active Cruise / Battery 400 Wh
- FRAME** aluminium 6061
- SIZE** Wave 28": 45, 50, 55 cm
- FORK** Suntour SF14-CR85-E25
- SHIFTING** Shimano Nexus 8-speed freehub
- BRAKES** Magura HS11, hydraulically rim brake
- TIRES** Schwalbe Energizer, 40-622, reflex
- WEIGHT** 25,4 kg (with battery)
- COLOUR** black matte

### VITALITY ECO 3

- SYSTEM** Bosch Active Cruise / Battery 400 Wh
- FRAME** aluminium 6061
- SIZE** grey matte = Wave 26": 45 cm | Wave 28": 45, 50, 55 cm // red matte = Wave 28": 45, 50, 55 cm // shiny black = Gents 28": 50, 55, 60 cm | Ladies 28": 45, 50, 55 cm
- FORK** Suntour SF14-CR85-E25
- SHIFTING** Shimano Nexus 7-speed coasterbrake
- BRAKES** Magura HS11, hydraulically rim brake
- TIRES** Schwalbe Energizer, 40-622, reflex
- WEIGHT** 25,2 kg (with battery)
- COLOUR** grey matte, red matte, shiny black





**VITALITY ECO 2**

**SYSTEM** Bosch Active Cruise / Battery 300 Wh  
**FRAME** aluminium 6061  
**SIZE** Wave 28": 45, 50, 55 cm  
**FORK** Suntour SF13-CR-8V  
**SHIFTING** Shimano Nexus 7-speed coasterbrake  
**BRAKES** Shimano V-Brake BR 11-422  
**TIRES** Schwalbe Citizen 42-622, reflex  
**WEIGHT** 24,9 kg (with battery)  
**COLOUR** shiny black

**VITALITY ECO 1**

**SYSTEM** Bosch Active Cruise / Battery 300 Wh  
**FRAME** aluminium 6061  
**SIZE** Wave 28": 45, 50, 55 cm  
**FORK** Suntour CR-8V  
**SHIFTING** Shimano Nexus 7-speed freehub  
**BRAKES** Magura HS11, hydraulically rim brake  
**TIRES** Schwalbe Citizen 42-622, reflex  
**WEIGHT** 25,0 kg (with battery)  
**COLOUR** silver matte

**VITALITY ECO PLUS**

**SYSTEM** Bosch Performance Cruise / Battery 400 Wh  
**FRAME** aluminium 6061  
**SIZE** Gents 28": 50, 55, 60, 65 cm | Wave 28": 50, 55, 60 cm  
**FORK** Suntour SF14-CR85-E25  
**SHIFTING** Shimano Nexus 8-speed freehub  
**BRAKES** Magura HS11, hydraulically rim brake  
**TIRES** Schwalbe Marathon Plus Tour, 42-622, reflex  
**WEIGHT** 26,0 kg (with battery)  
**COLOUR** silver matte



**170 kg  
MAX. WEIGHT**

**VITALITY**

**SYSTEM** units frontengine / Battery 360 Wh  
**FRAME** aluminium 6061  
**SIZE** Wave 28": 45, 50, 55 cm  
**FORK** Suntour CR-8V V2, adjustable  
**SHIFTING** Shimano Nexus 7-speed coasterbrake  
**BRAKES** aluminium V-Brake  
**TIRES** Continental City Ride 42-622, reflex  
**WEIGHT** 22,9 kg (with battery)  
**COLOUR** shiny silver grey





E-BIKES FOR COMFORT

# Panasonic



1

## OPERATING UNIT

The rainproof and dustproof operating unit in a smartphone look is legible even in direct sunlight. It has numerous displays such as the average, maximum or current speed, total kilometres and the trip distance, the remaining range and the current support mode. The additional remote control on the handlebars provides greater safety as the hands remain on the handlebars. A fault diagnosis can be read out via an USB port, but external hardware (e.g. smartphone or an MP3 player) can also be charged.



2

## BATTERY

This is the first E-Bike system to offer both direct charging of the battery on the bike and via an external upright charger. The easy to remove and optimized Panasonic battery provides 540 Wh with a voltage of 36V and a charge of 15 Ah. The lithium ion battery is fully charged in around 6 hours.



3

## MID-MOTOR

When compared with its predecessor, the new mid-motor system from Panasonic is much compact and has a greater torque. The robust mid-motor includes a powerful planetary gear, has an output of 250W and weighs a mere 3 kg.







1

2

3

### VITALITY ECO 7

**SYSTEM** Panasonic mid engine / Battery 540 Wh

**FRAME** aluminium 6061

**SIZE** Wave 28": 45, 50, 55 cm

**FORK** Suntour SF14-CR85-E25

**SHIFTING** Shimano Nexus 8-speed coasterbrake or freehub

**BRAKES** Magura HS11 hydraulically rim brake

**TIRES** Schwalbe Energizer, 40-622, reflex

**WEIGHT** 26,4 kg (with battery)

**COLOUR** shiny black



# E-BIKES FOR COMFORT



1

2

3

4



**SYSTEM** STePS mid engine / Battery 418 Wh  
**FRAME** aluminium 6061  
**SIZE** Wave 28": 45, 50, 55 cm  
**FORK** Suntour SF14-CR85-E25  
**SHIFTING** Shimano Nexus 8-speed DI2 freehub  
**BRAKES** Magura HS11, hydraulically rim brake  
**TIRES** Schwalbe Energizer, 40-622, reflex  
**WEIGHT** 25,6 kg (with battery)  
**COLOUR** shiny white

# SHIMANO STePS

With the STePS drive system, SHIMANO is presenting a new mid-motor system for the eBike segment. STePS is a fully-integrated components system from the global market leader for bike components. The drive unit, battery, front transmission, bike computer and the chain all work perfectly together. Our Kreidler eBikes have been especially developed for this drive and add to the benefits offered by an innovative drive by the tried and tested Kreidler frame technology and high-quality and durable components.

## 1 STEPS-DISPLAY

Discrete and clear - the STePS on-board computer provides you with all of the information you need concerning the selected transmission mode, the battery range, the travel speed and the distance travelled.



## 2 BATTERY

Durable, strong and reliable - The lithium ion battery in the STePS system has a capacity of 418 Wh. The battery is already fully charged after just four hours. The battery is discretely integrated in the clever Racktime bike rack, is easy to remove and only weighs 2.5 kg.



## 3 MID-MOTOR

Compact, light and powerful - with its rated output of 250 W, the STePS mid-motor from SHIMANO has a maximum torque of 50 Nm and weighs in at just 3.1 kg. The compact system drive supports the biker at the three levels Eco, Normal or High, depending on requirements. When doing so, the mid-motor works especially quietly and due to its lean and light design, it also ensures a simple handling of the E-Bike.



## 4 CHAIN AND CRANK SET

Efficient, silent, low maintenance - with a strong drive, other forces have an effect on the chain and crank set. With the chain and crank set as STePS components, Shimano offers system components that compensate the higher burden.

Technical Information Source: Shimano





# TREKKING



The Trekking-all-rounder for long tours and daily use in all weathers. We send the re-engineered RT8 into hard everyday and touring races with top components and a super-light tapered aluminium frame. The Shimano XT 3x10 gearshift that has made a name for itself in continuous operation, the multiply awarded Schwalbe Marathon Racer tyres or the ergonomically demanding Selle Royal Ariel gel saddle is just some proof of our high quality demands. With clever equipment details such as the Racktime bicycle rack, the Trelock LED lighting or the Shimano hub dynamo, we have tied up a perfect trekking packet with the RT8.

## RAISE RT8

**FRAME** aluminium 6061

**SIZE** Gents 28": 50, 55, 60 cm

**FORK** Suntour NCX-DLO

**SHIFTING** Shimano XT 3x10

**BRAKES** disc brake Shimano Acera BR-M395, hydraulically

**TIRES** Schwalbe Marathon Racer 35-622, reflex

**WEIGHT** 15,8 kg

**COLOUR** black matte





TREKKING

RAISE

### RAISE RT7

---

**FRAME** aluminium 6061  
**SIZE** Gents 28": 50, 55, 60 cm | Ladies 28": 45, 50, 55 cm  
**FORK** Suntour SF14-NCX-DLO  
**SHIFTING** Shimano Deore 30-speed  
**BRAKES** Magura HS11 Pure, hydraulically rim brake  
**TIRES** Schwalbe Marathon Racer 35-622, reflex  
**WEIGHT** 15,6 kg  
**COLOUR** black matte

### RAISE RT6

---

**FRAME** aluminium 6061  
**SIZE** Gents 28": 50, 55, 60 cm | Ladies 28": 45, 50, 55 cm  
**FORK** Suntour SF13-NEX4610-ML0  
**SHIFTING** Shimano Deore 27-speed  
**BRAKES** disc brake Shimano Acera BR-M395, hydraulically  
**TIRES** Schwalbe Marathon 42-622, reflex  
**WEIGHT** 17,6 kg  
**COLOUR** grey matte

RT7





**RAISE RT5**

**FRAME** aluminium 6061  
**SIZE** Gents 28": 50, 55, 60 cm | Ladies 28": 45, 50, 55 cm  
**FORK** Suntour SF13-NEX4610-HLO  
**SHIFTING** Shimano Deore 24-speed  
**BRAKES** Magura HS11 Pure, hydraulically rim brake  
**TIRES** Schwalbe Citizen 37-622, reflex  
**WEIGHT** 17,2 kg  
**COLOUR** shiny black

**RAISE RT5 LIMITED**

**FRAME** aluminium 6061  
**SIZE** Gents 28": 50, 55, 60 cm | Ladies 28": 45, 50, 55 cm  
**FORK** Suntour SF13-NEX4610-HLO  
**SHIFTING** Shimano Deore 24-speed  
**BRAKES** V-Brake Shimano, black  
**TIRES** Schwalbe Citizen 37-622  
**WEIGHT** 17,2 kg  
**COLOUR** shiny black

**RAISE RT5 LIMITED**

**FRAME** aluminium 6061  
**SIZE** Gents 28": 50, 55, 60 cm | Wave 28": 45, 50, 55 cm  
**FORK** Suntour SF13-NEX4610-HLO  
**SHIFTING** Shimano Nexus 8-speed coasterbrake  
**BRAKES** V-Brake Shimano, black  
**TIRES** Schwalbe Citizen 37-622  
**WEIGHT** 17,8 kg  
**COLOUR** shiny black





TREKKING

# CAN IT BE A LITTLE MORE?

More mobility for a fitness plus.

170 kg  
MAX. WEIGHT

## RAISE RT PLUS

**FRAME** aluminium 6061

**SIZE** Gents 28": 55, 60, 65 cm | Wave 28": 50, 55, 60 cm

**FORK** suspension fork Suntour CR-8V, adjustable

**SHIFTING** Shimano Nexus 7-speed coasterbrake

**BRAKES** Magura HS11 Pure, hydraulically rim brake

**TIRES** Schwalbe Road Plus, 47-622, reflex

**WEIGHT** 19,2 kg

**COLOUR** shiny silver



The model with the hub gear is also available as an E-Bike.  
You will find all of the information on this on page 39.



+ REINFORCED FRAME & SPRING ELEMENT

+ SCHWALBE ROAD PLUS TYRES

+ MAGURA HS11 BRAKES

+ STABLE SPOKES

+ FRAME SIZES

Gents bikes max. 65 cm

Ladies bikes max. 60 cm

**170 kg**  
MAX. WEIGHT



#### RAISE RT PLUS

**FRAME** aluminium 6061

**SIZE** Gents 28": 55, 60, 65 cm

**FORK** suspension fork Suntour CR-8V, adjustable

**SHIFTING** Shimano Acera 27-speed

**BRAKES** Magura HS11 Pure, hydraulically rim brake

**TIRES** Schwalbe Road Plus, 47-622, reflex

**WEIGHT** 18,6 kg

**COLOUR** shiny silver

RAISE RT PLUS



TREKKING

### RAISE RT LIGHT

---

**FRAME** aluminium 6061

**SIZE** Gents 28": 50, 55, 60 cm |

Ladies 28": 45, 50, 55 cm | Wave 28": 45, 50, 55 cm

**FORK** aluminium 6061

**SHIFTING** Shimano Nexus 7-speed coasterbrake

**BRAKES** Shimano V-Brake

**TIRES** Schwalbe Citizen, reflex, 37-622x

**WEIGHT** 14,8 Kg

**COLOUR** chrom



### RAISE RT LIGHT

---

**FRAME** aluminium 6061

**SIZE** Gents 28": 50, 55, 60 cm | Ladies 28": 45, 50, 55 cm

**FORK** aluminium 6061

**SHIFTING** Shimano Acera 27-speed

**BRAKES** Shimano V-Brake

**TIRES** Schwalbe Citizen, reflex, 37-622x

**WEIGHT** 14,6 Kg

**COLOUR** chrom



RAISE RT LIGHT







TREKKING



#### RAISE RT4

**FRAME** aluminium 6061  
**SIZE** Gents 28": 50, 55, 60 cm | Ladies 28": 45, 50, 55 cm  
**FORK** Suntour CR-7V  
**SHIFTING** Shimano Acera 27-speed  
**BRAKES** V-Brake aluminium, black  
**TIRES** Trax Tour 42-622, reflex  
**WEIGHT** 17,4 kg  
**COLOUR** shiny anthracite

#### RAISE RT2.1

**FRAME** aluminium 6061  
**SIZE** Gents 28": 50, 55, 60 cm | Ladies 28": 45, 50, 55 cm | Wave 28": 45, 50, 55 cm  
**FORK** Suntour CR-7V  
**SHIFTING** Shimano Nexus 7-speed coasterbrake  
**BRAKES** V-Brake aluminium, black  
**TIRES** Trax Tour 42-622, reflex  
**WEIGHT** 17,6 kg  
**COLOUR** black matte

#### RAISE RT4

**FRAME** aluminium 6061  
**SIZE** Gents 28": 50, 55, 60 cm | Ladies 28": 45, 50, 55 cm | Wave 28": 45, 50, 55 cm  
**FORK** Suntour CR-7V  
**SHIFTING** Shimano Nexus 8-speed coasterbrake  
**BRAKES** V-Brake aluminium, black  
**TIRES** Trax Tour 42-622, reflex  
**WEIGHT** 17,9 kg  
**COLOUR** shiny anthracite







### RAISE RT2.1

**FRAME** aluminium 6061

**SIZE** Gents 28": 50, 55, 60 cm | Ladies 28": 45, 50, 55 cm

**FORK** Suntour CR-7V

**SHIFTING** Shimano Acera 21-speed

**BRAKES** V-Brake aluminium, black

**TIRES** Trax Tour 42-622, reflex

**WEIGHT** 17,2 kg

**COLOUR** black matte



### RAISE RT2

**FRAME** aluminium 6061

**SIZE** Gents 28": 50, 55, 60 cm | Ladies 28": 45, 50, 55 cm | Wave 28": 45, 50, 55 cm

**FORK** Suntour CR-7V

**SHIFTING** Shimano Nexus 7-speed  
coasterbrake

**BRAKES** V-Brake aluminium, black

**TIRES** Trax Tour 42-622, reflex

**WEIGHT** 17,6 kg

**COLOUR** silver matte



### RAISE RT2

**FRAME** aluminium 6061

**SIZE** Gents 28": 50, 55, 60 cm | Ladies 28": 45, 50, 55 cm

**FORK** Suntour CR-7V

**SHIFTING** Shimano Acera 21-speed

**BRAKES** V-Brake aluminium, black

**TIRES** Trax Tour 42-622, reflex

**WEIGHT** 17,2 kg

**COLOUR** silver matte





# Adenauer & Co

The german beach house company

Adenauer & Co  
Spezialgeschäft

AtCO.

ADENAUER  
& CO  
BEACHHOUSE



CASST





Full roads, shopping, collect children - urban requirements make the highest degree of comfort and reliability necessary. With the new Cash 1.0, we have created the ideal companion for daily use in the city. The low access and the comfortable seating position in combination with the low-maintenance Shimano hub gear, the strong applying Tektro-V brakes and the Schwalbe Citizen puncture-proof tyres provide excellent comfort together with safety and functionality. The nostalgic flair of the design and much love to the optimum detail, also make the Cash an eye-catcher in any situation.

### CASH 1.0

**FRAME** aluminium 6061

**SIZE** Wave 28": 49, 54 cm

**FORK** Suntour CR-7V

**SHIFTING** Shimano Nexus 7-speed coasterbrake

**BRAKES** Tektro Mini V-Brake RX-S

**TIRES** Schwalbe Citizen, 47-622, reflex

**WEIGHT** 18,6 kg

**COLOUR** black matte or red matte



You will find prices and additional information here: [www.kreidler.com](http://www.kreidler.com)

also available in red matte



CITY  
NATURAL



## NATURAL N3

**FRAME** aluminium 6061

**SIZE** Wave 26": 45 cm // Wave 28": 45, 50, 55 cm

**FORK** Suntour CR-8V V2, adjustable

**SHIFTING** Shimano Nexus 7-speed coasterbrake

**BRAKES** aluminium V-Brake

**TIRES** Schwalbe Citizen, 47-622, reflex

**WEIGHT** 18,9 kg

**COLOUR** bordeaux matte





### NATURAL N1

**FRAME** aluminium 6061

**SIZE** Wave 26": 45 cm // Wave 28": 45, 50, 55 cm

**FORK** Suntour CR-7V

**SHIFTING** Shimano Nexus 3-speed coasterbrake

**BRAKES** V-Brake aluminium, black

**TIRES** Schwalbe Citizen, 47-622, reflex

**WEIGHT** 18,2 kg

**COLOUR** shiny white

### TRANSPORT BIKE

**FRAME** HiTen reinforced Triple Tube, Tube carrier system for post container, for 2 container size 2 in front, 1 carrier size 2 rear

**SIZE** 24" / 26" Uni

**FORK** 24", HiTen, for roller brake, reinforced steerer

**SHIFTING** Sram Spectro 5-speed

**BRAKES** front: Sturmey Archer drum brake, rear: coasterbrake Sram Spectro P5

**TIRES** Nokian Pacer XC

**WEIGHT** 35 kg

**COLOUR** shiny black





MOOI FIETSEN



ZAAANDAM

RATICE





### ZAANDAM

**FRAME** aluminium 6061  
**SIZE** Gents 28": 53, 57 cm | Wave 28": 50, 55 cm  
**FORK** Suntour CR-8V  
**SHIFTING** Shimano Nexus 7-speed freehub  
**BRAKES** Shimano Nexave, rollerbrake IM-45  
**TIRES** Schwalbe Citizen 42-622, reflex  
**WEIGHT** 18,9 kg  
**COLOUR** anthracite metallic / chrome

### ZAANDAM ECO

**FRAME** aluminium 6061  
**SIZE** Gents 28": 53, 57 cm | Wave 28": 50, 55 cm  
**FORK** Suntour CR-8V  
**SHIFTING** Shimano Nexus 3-speed freehub  
**BRAKES** Shimano Nexave, rollerbrake IM-45  
**TIRES** Schwalbe Citizen 42-622, reflex  
**WEIGHT** 18,6 kg  
**COLOUR** chrome / shiny blue



### RAISE RT4 NL

**FRAME** aluminium 6061  
**SIZE** Gents 28": 55, 60 cm | Wave 28": 50, 55 cm  
**FORK** Suntour CR-7V  
**SHIFTING** Shimano Nexus 7-speed freehub  
**BRAKES** V-Brake aluminium, black  
**TIRES** Trax Tour 42-622, reflex  
**WEIGHT** 17,9 kg  
**COLOUR** shiny anthracite



### RAISE RT2 NL

**FRAME** aluminium 6061  
**SIZE** Gents 28": 55, 60 cm | Wave 28": 50, 55 cm  
**FORK** Suntour CR-7V  
**SHIFTING** Shimano Nexus 3-speed freehub  
**BRAKES** V-Brake aluminium, black  
**TIRES** Trax Tour 42-622, reflex  
**WEIGHT** 16,9 kg  
**COLOUR** silver matte





Your specialised Kreidler dealer will be pleased to advise you competently:

cycle union GmbH  
An der Schmiede 4  
D - 26135 Oldenburg  
Germany  
E-Mail: [info@kreidler.com](mailto:info@kreidler.com)

Photography: Pino Petrillo  
[www.pino-petrillo.de](http://www.pino-petrillo.de)

A brand of

